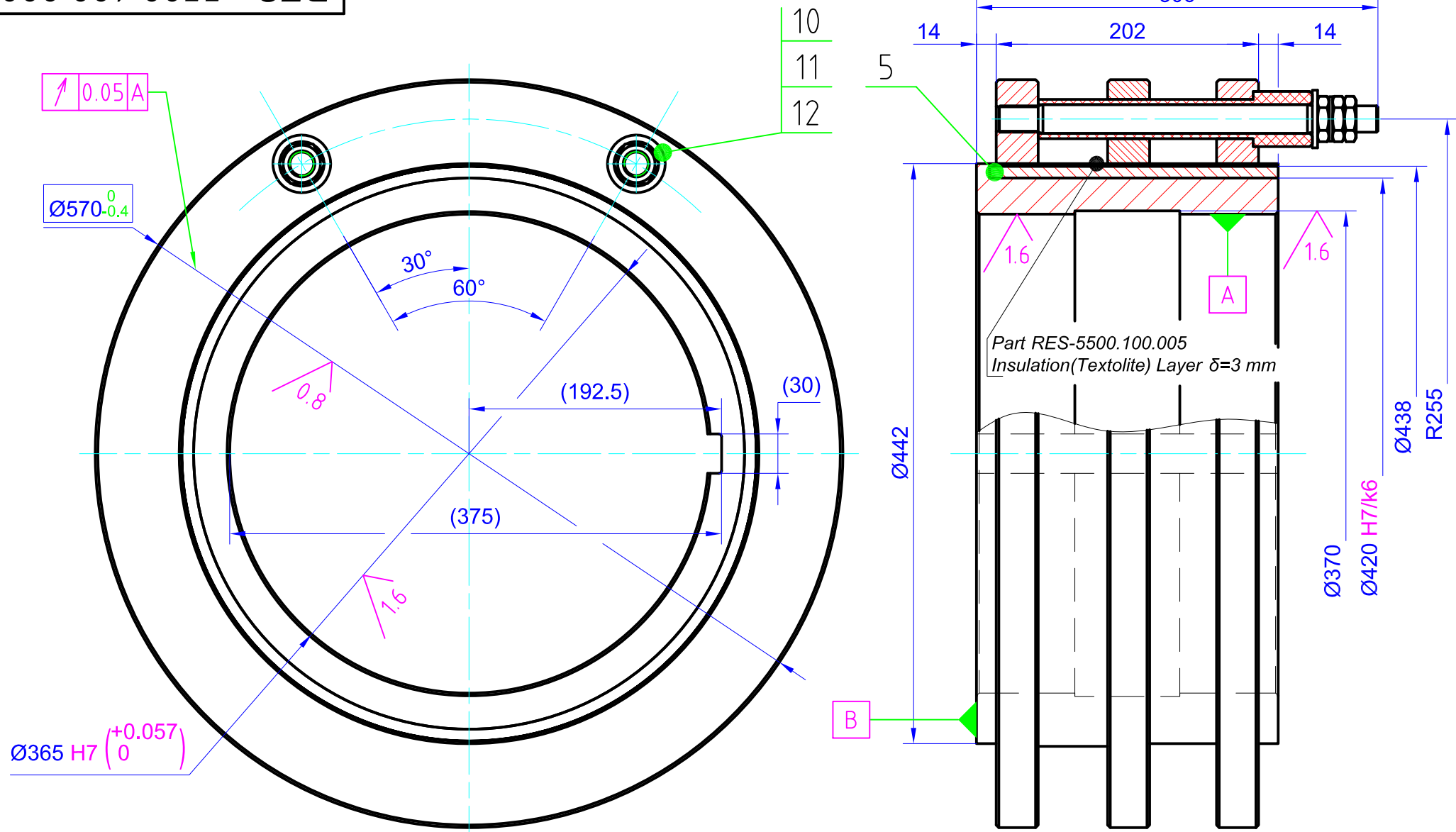


SPECIFICATION

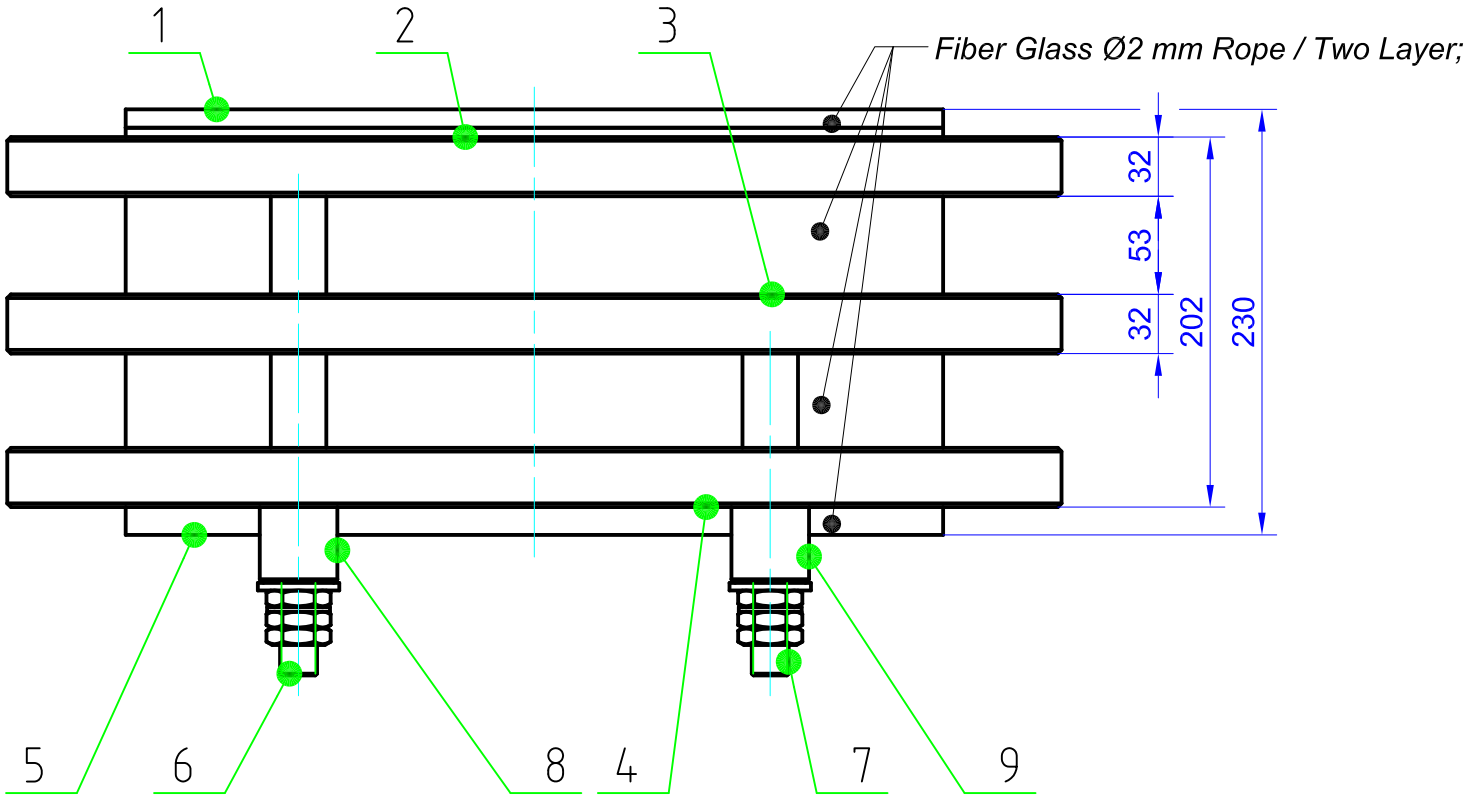
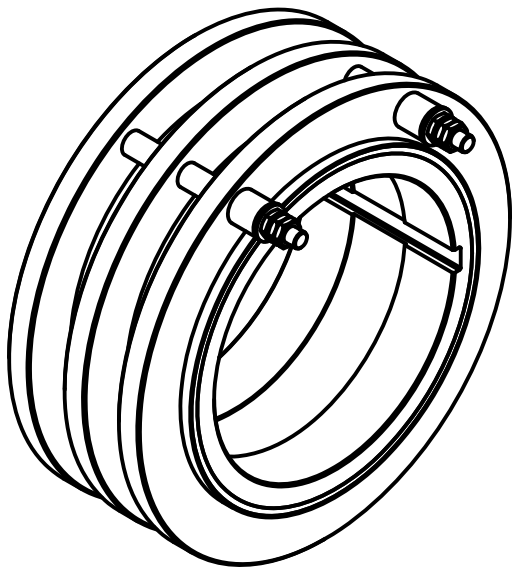
Format	Zone	Position	Marks	Description	Quantity	Weight, kg		Remarks
						Unit	Total	
				<u>NODE DATA</u>				
A3			RES - 5000.100.000	<u>Slip Ring</u>				
				<u>Parts Description:</u>				
A4		1	RES - 5000.100.001	Body	1	---	60	
A4		2	RES - 5000.100.002	Ring	1	---	28.75	
A4		3	RES - 5000.100.003	Ring	1	---	28.55	
A4		4	RES - 5000.100.004	Sealing Ring	1	---	25.5	
A4		5	RES - 5000.100.005	Average Ring	1	---	20.9	
A4		6	RES - 5000.100.006	Coundactive Thread	1	---	0.96	
A4		7	RES - 5000.100.007	Coundactive Thread	1	---	0.68	
A4		8	RES - 5000.100.008	Insulation Bush	1	---	0.20	
A4		9	RES - 5000.100.009	Insulation Bush	1	---	0.15	
				Standart Parts				
		10	Bolt M20	GOST 5916 - M20 X 1.5	6	0.04	0.24	Materials: Couper
		11	Washer N20	GOST 10450-78	2	0.01	0.02	Materials: Q235A
		12	Washer N24	GOST 11371-78 - 25 A	2	0.03	0.06	Materials: Textolite
				Node Total Weight:			166.01	

UNLESS OTHERWISE SPECIFIED DIMENSIONS ARE IN MILLIMETERS SURFACE FINISH TOLERANCES LINEAR ANGULAR.				FINISH		DEBUR AND BREAK SHARP EDGES		REVISION	
								GIEC	
	NAME	SIGNATURE	DATE			SLIP RING			
DRAWN	L. Chipashvili								
CHKD	L. Chipashvili								
APPVD									
MFG									
Q.A				MATERIAL:		RES - 5500.100.000			A4
				wona /WEIGHT: 00. 0 kg		Scale: ---		Sheet 1/1	



Technical Requirements:

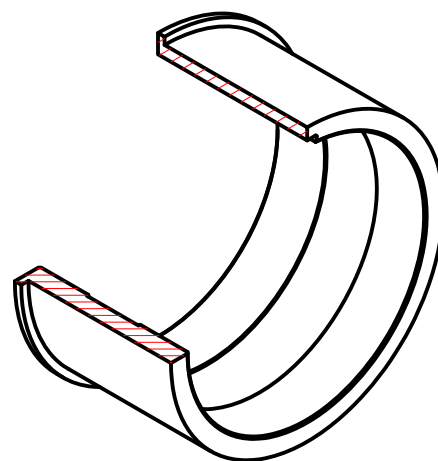
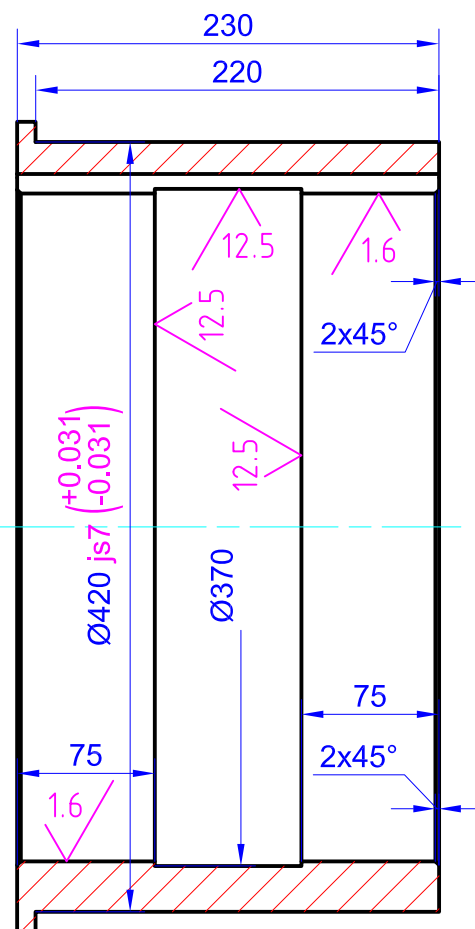
1. Insulation Cours(Textolite) Thikness must be minimum $\delta=2$ mm;
2. On the Node After winding of fiber glass Rope hawe to be paint - RAL 1031 Colour paint;
3. After Fixsing the Coundactive Thread (Caurrying - out - thread) need to be Solder;



NOTE:

1. ** Size notice;
2. Notspecifaid admition Size $\pm \frac{IT14}{2}$;
3. Data in Bruckets, were entered After dismantel of the Node on Flace;
4. Round off not Specifaid sharp edges on $R=0.5 - 1$ mm;
5. When Processing Node it is Mandatory to Take in to Account the exact data in the Table;

UNLESS OTHERWISE SPECIFIED DIMENSIONS ARE IN MILLIMETERS SURFACE FINISH TOLERANCES LINEAR ANGULAR.				FINISH		DEBUR AND BREAK SHARP EDGES		REVISION	
								GIEC	
								SLIP RING	
								RES - 5500.100.000	
								A3	
								Scale: 1:4	
								Sheet 1/1	
								formati A3	



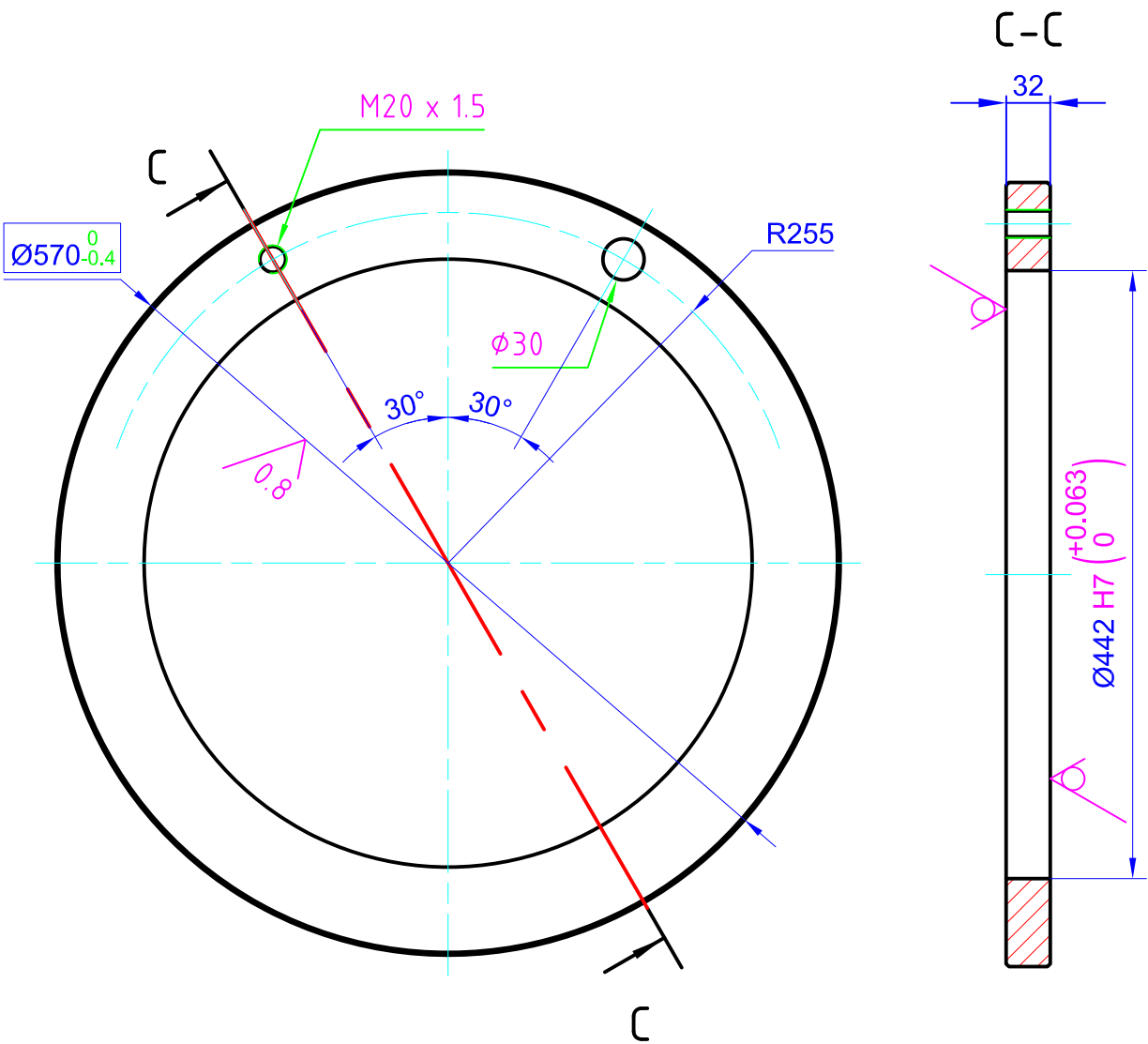
1. **** Size notice;**
2. **Notspecifaid admition Size $\pm \frac{IT14}{2}$;**
3. **Data in Bruckets, were entered After dismantel of the Node on Flace;**
4. **Round off not Specifaid sharp edges on R=0.5 - 1 mm;**
5. **When Processing Node it is Mandatory to Take in to Account the exact data in the Table;**

formati	A4
---------	----



1. **** Size notice;**
2. **Notspecificad admition Size $\pm \frac{IT14}{2}$.**
3. **Data in Bruckets, were entered After dismantel of the Node on Flace;**
4. **Round off not Specifaid sharp edges on R=0.5 - 1 mm;**
5. **Making material: Steel **Бр Ср** 0.1 can be changed to **БрХ 0.7**;**

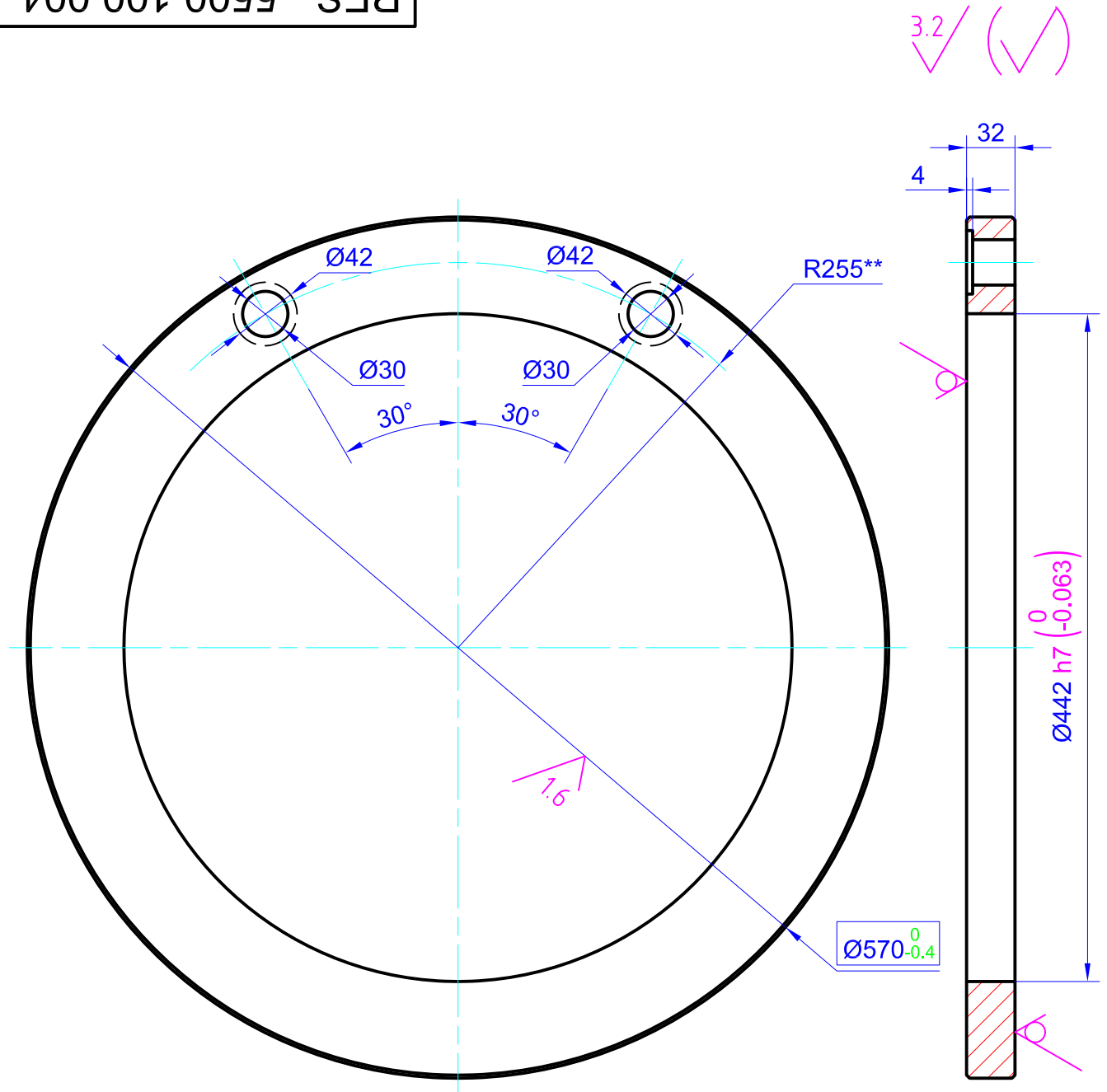
formati	A4
----------------	----



NOTE:

- 1. ** Size notice;
- 2. Notspecifaid admition Size $\pm \frac{IT14}{2}$;
- 3. Data in Bruckets, were entered After dismantel of the Node on Flace;
- 4. Round off not Specifaid sharp edges on $R=0.5 - 1$ mm;
- 5. Making material: Steel **Бр Ср** 0.1 can be changed to **БрХ 0.7**;

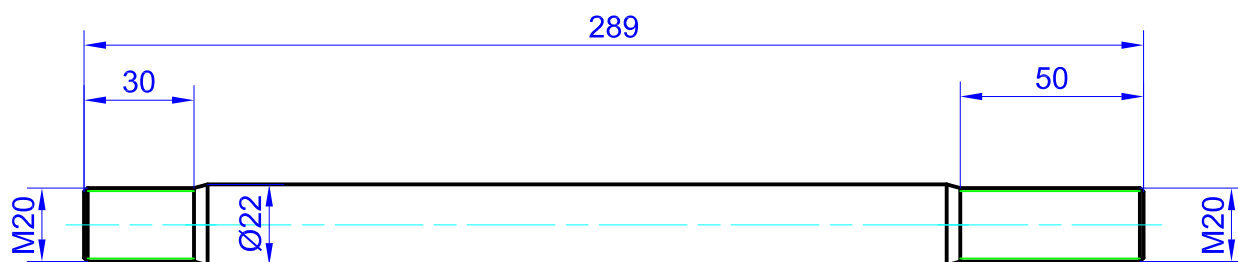
UNLESS OTHERWISE SPECIFIED DIMENSIONS ARE IN MILLIMETERS SURFACE FINISH TOLERANCES LINEAR ANGULAR.				FINISH				DEBUR AND BREAK SHARP EDGES				REVISION			
												GIEC			
NAME		SIGNATURE		DATE								RING			
DRAWN L. Chipashvili															
CHK'D L. Chipashvili															
APP'VD															
MFG															
Q.A						MATERIAL: БpCp 0.1 / CuAg0.1						RES - 5500.100.003		A4	
						wona /WEIGHT: 28. 55 kg				Scale: 1:5		Sheet 1/1			

**NOTE:**

1. ** Size notice;
2. Notspecifaid admition Size $\pm \frac{IT_{14}}{2}$;
3. Data in Bruckets, were entered After dismantel of the Node on Flace;
4. Round off not Specifaid sharp edges on $R=0.5 - 1$ mm;
5. Making material: Steel **Ck - 45** can be changed to **Q235A**;
6. When Processing Node it is Mandatory to Take in to Account the exact data in the Table;

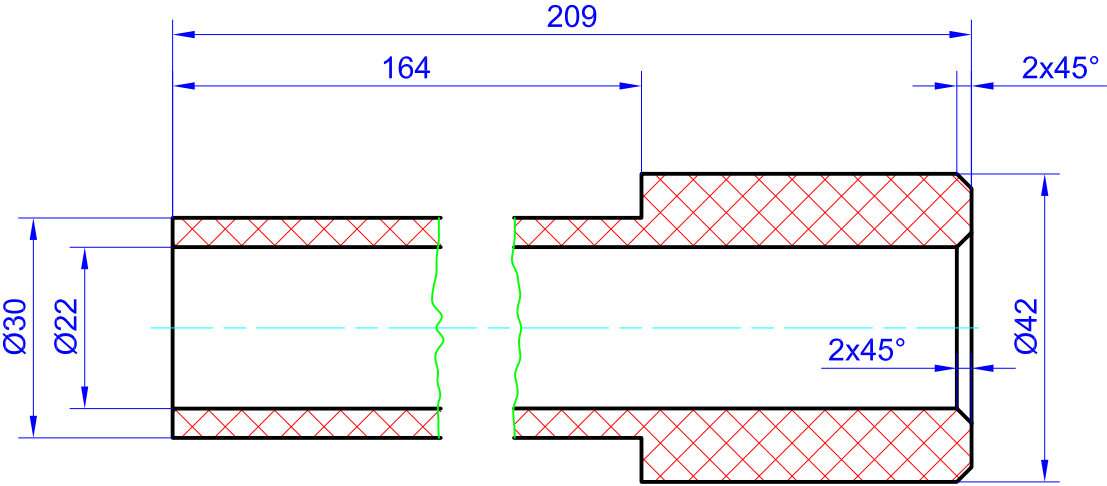
UNLESS OTHERWISE SPECIFIED DIMENSIONS ARE IN MILLIMETERS SURFACE FINISH TOLERANCES LINEAR ANGULAR.				FINISH		DEBUR AND BREAK SHARP EDGES		REVISION	
								GIEC	
NAME		SIGNATURE		DATE				<div>SEALING RING(Anther)</div>	
DRAWN L. Chipashvili									
CHK'D L. Chipashvili									
APP'VD									
MFG									
Q.A				MATERIAL: Ck - 45				RES - 5500.100.004	
								A4	
				wona /WEIGHT: 25. 50 kg		Scale: 1:4		Sheet 1/1	

3.2 ✓ (✓)



UNLESS OTHERWISE SPECIFIED DIMENSIONS ARE IN MILLIMETERS SURFACE FINISH TOLERANCES LINEAR ANGULAR.		FINISH		DEBUR AND BREAK SHARP EDGES		REVISION	
						GIEC	
NAME		SIGNATURE	DATE			CONDUCTIVE SCREW	
DRAWN	L. Chipashvili						
CHK'D	L. Chipashvili						
APP'VD							
MFG							
Q.A				MATERIAL: Copper / Cu-CATH-2		RES - 5500.100.006	
						A4	
				wona / WEIGHT: 0.96 kg		Scale: 1:2	
						Sheet 1/1	

formati	A4
----------------	----



UNLESS OTHERWISE SPECIFIED DIMENSIONS ARE IN MILLIMETERS SURFACE FINISH TOLERANCES LINEAR ANGULAR.				FINISH		DEBUR AND BREAK SHARP EDGES	REVISION	
							GIEC	
	NAME	SIGNATURE	DATE				INSULATING BUSH	
DRAWN	L. Chipashvili							
CHKD	L. Chipashvili							
APPVD								
MFG								
Q.A							RES - 5500.100.008	
							Scale: 1:1	
							Sheet 1/1	
							formati A4	

INSULATING BUSH

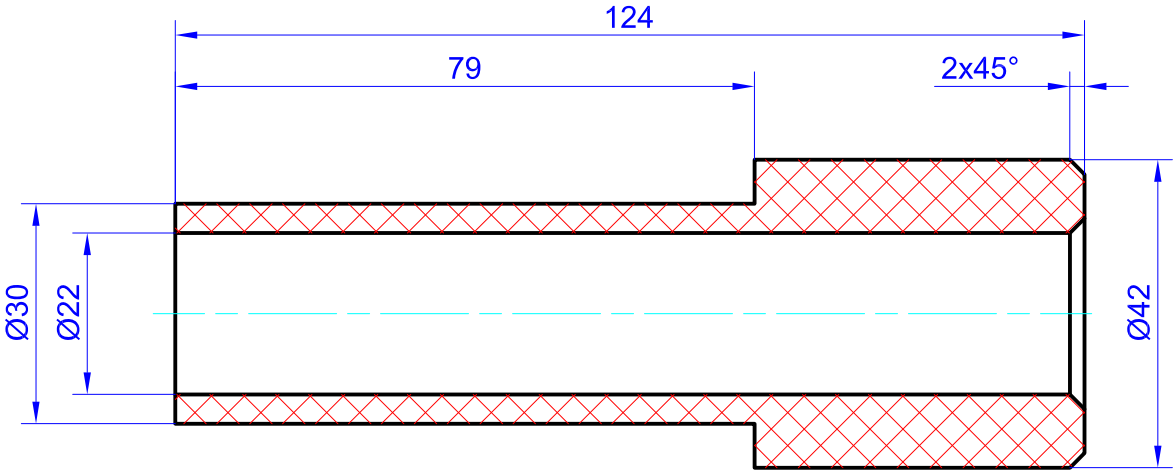
RES - 5500.100.008

A4

Scale: 1:1

Sheet 1/1

RES - 5500.100.009



UNLESS OTHERWISE SPECIFIED DIMENSIONS ARE IN MILLIMETERS SURFACE FINISH TOLERANCES LINEAR ANGULAR.				FINISH		DEBUR AND BREAK SHARP EDGES		REVISION	
								GIEC	
	NAME	SIGNATURE	DATE					INSULATING BUSH	
DRAWN	L. Chipashvili								
CHKD	L. Chipashvili								
APPVD									
MFG									
Q.A									
						MATERIAL: asbotekstoliti / teqstoliti Б-30 / ПТК-20 / ГОСТ 5-90		RES - 5500.100.009	
						wona / WEIGHT: 0. 15 kg		A4	
						Scale: 1:1		Sheet 1/1	